

# ST JOSEPH'S SCHOOL

## FACT SHEET FOR PARENTS REGARDING SCHOOL BUILDING PROJECT

### *Why are we rebuilding the school?*

This year St Joseph's is 90 years old. Over many years, the school has evolved based on its' enrolment trends and educational needs. The current school buildings and classrooms are not ideal for meeting the current needs of children because:

- Many classrooms are undersized and therefore uncomfortably tight
- Many classrooms are in ongoing need of refurbishment including glazing, painting, acoustic treatment, electrical and data upgrades
- A number of classrooms are threatened annually by flooding
- Maintenance required on the buildings and classrooms is significant just to keep them safe and to make them more suitable for modern day learning

After many years of applying for government funding to refurbish the school, and after being refused on each occasion, it was decided to change tack and completely rethink our forward planning for the school.

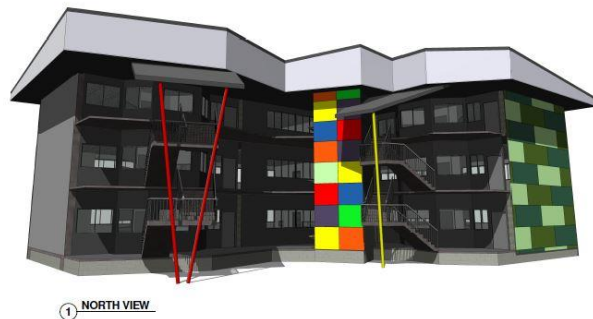
Prior applications had been to request band-aid solutions, however in 2015 we decided to more boldly apply for a complete rebuild of practically the entire school.

This decision was unanimously ratified by the school leadership, school board, P&F parent representatives, parish priest and the Diocese of Cairns.

Late last year we were excited to receive approval of our application.

### *What are we building?*

We are building a three storey series of learning spaces for years 1-6 and a single storey prep learning space. These are innovative learning environments (ILEs) characterised by comfortable furniture and are acoustically treated. They each have fully visible break out spaces and outdoor learning spaces. Each floor will have a toilet. (Refer to the Principal Learning Blog for research and discussion around ILEs.)



Teachers and staff will be provided with a hub in each ILE to facilitate shared resources and lesson planning. They will be teaching in teams.

We are building a large multi-purpose court area incorporating two large fans, eating areas, a school storage area and P&F store. This will be adjacent to the oval and is being built by reusing the current material.

A new state of the art tuckshop is being built, as are new male and female toilets. These toilets will be singular (domestic style) with communal and visible wash areas.

## What is not changing?

The following areas are not being impacted by the building project:

- Administration (minor renovations only)
- Performing Arts Hall
- Library
- OSHC rooms
- Kitchen Garden

## When will the building project begin?

We are planning for late February or early March. The duration of the build is approximately 18 months.

## How will we minimise disruption including noise?

Class locations were changed late 2016 to accommodate the first phase of the building, which is the 3 storey ILE block (block F) and Prep. Most classes are therefore located away from the site. Whilst we cannot guarantee there will be no noise from the construction process, we envisage there to be minimal issues with noise and disruption to learning.

We will lose the use of the courts and junior playground during construction. Alternative play arrangements are being explored, eg the hall.

Occupation of the ILEs will occur some time towards the end of this year (exciting). Alternative tuckshop, toilet and play areas will be arranged as the need arises.

## Outside of School Hours Care (OSHC)

OSHC services will run as normal during construction. Alternative outdoor spaces will be used.

## What isn't included?

- Playground for Prep including sandpit
- Replacement junior play equipment
- Covered walkways
- Major landscaping and beautification

The P&F and school budgets will need to focus on these areas in the coming years.

## How will we ensure the safety of children and others during the construction process?

Safety of all people on site will be a major focus of both the construction company and the staff of the school. Together we will ensure that the Workplace Health and Safety standards are maintained at all times and keep a clear separation between the construction zone and the student occupied zone.

## How do I find out more?

- Attend the monthly P&F meetings
- Contact the school
- Read and respond to the Principal's Blog
- Read the fortnightly School newsletters

